

**Children's
Budget Summit**

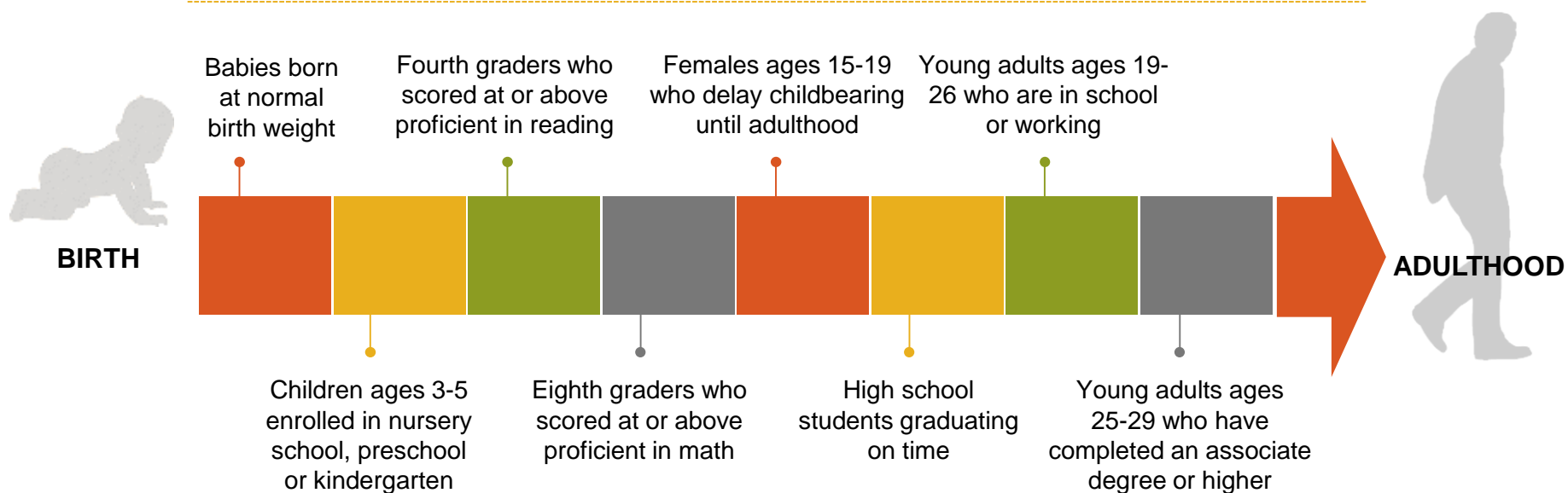
June 24, 2015

Patrick T. McCarthy

THE ANNIE E. CASEY FOUNDATION



Path to a Bright Future



Children who live with a householder who has at least a high school diploma



Children who live in two-parent families



Children who live in families with incomes at or above 200 percent of poverty



Children who live in low-poverty areas (less than 20 percent in poverty)



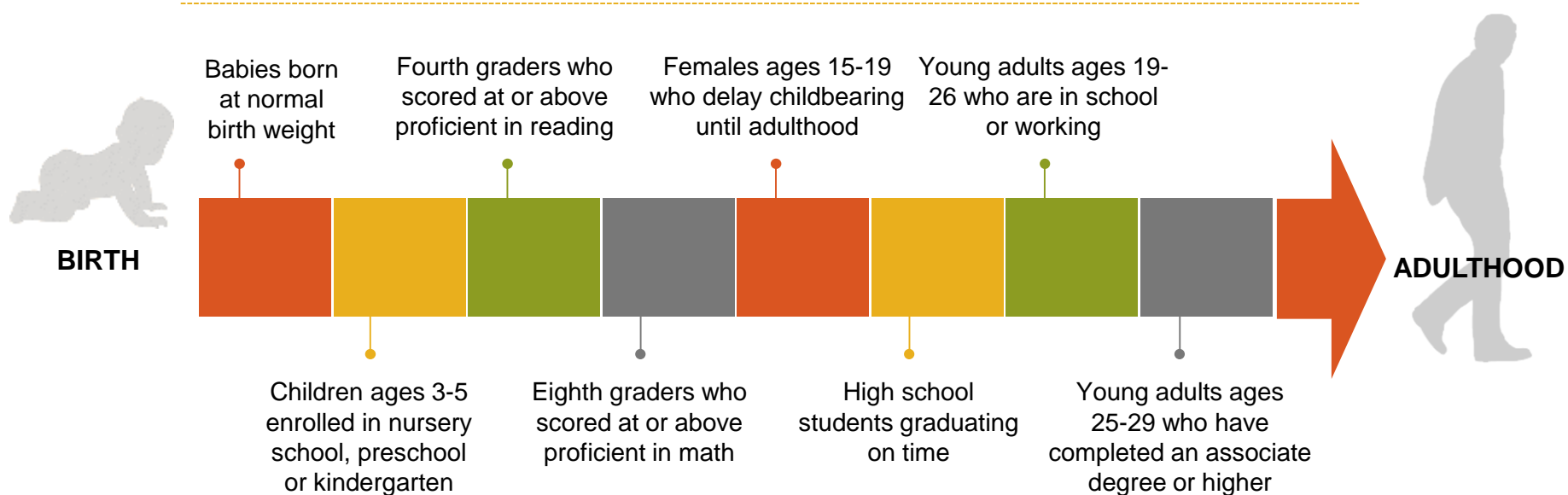








Path to a Bright Future



Children who live with a householder who has at least a high school diploma



Children who live in two-parent families



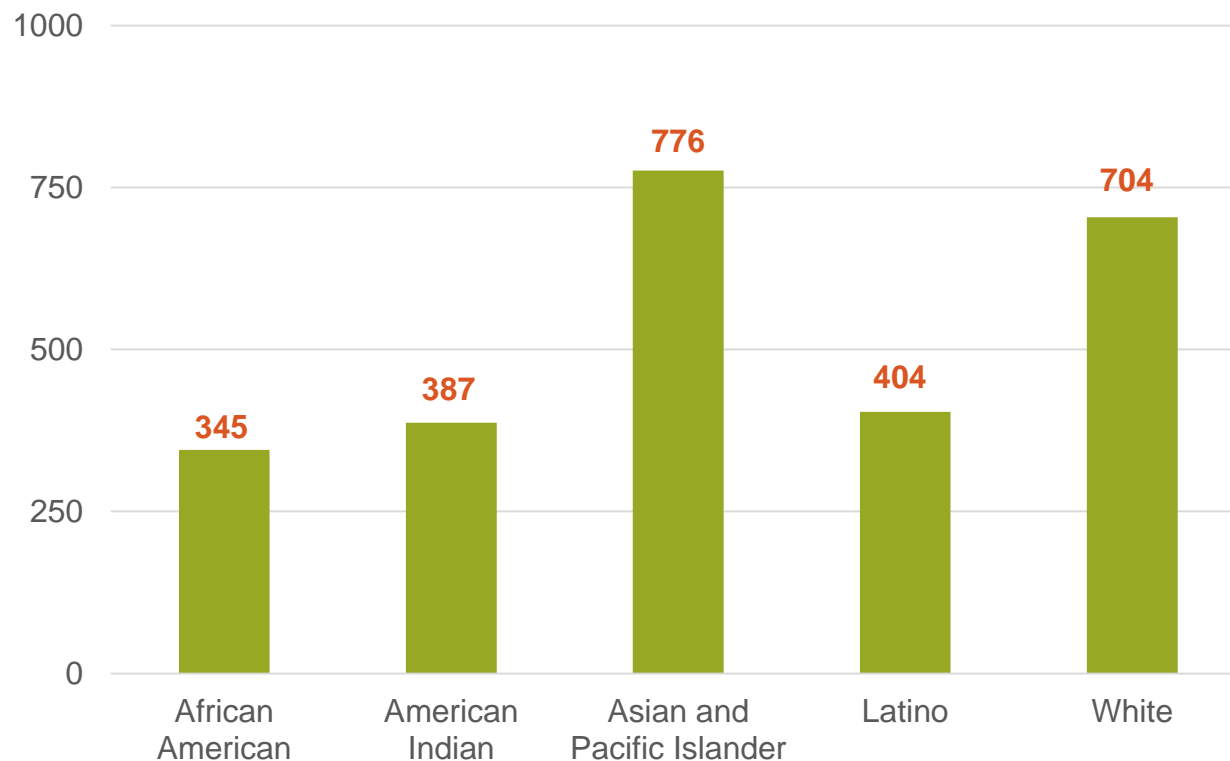
Children who live in families with incomes at or above 200 percent of poverty



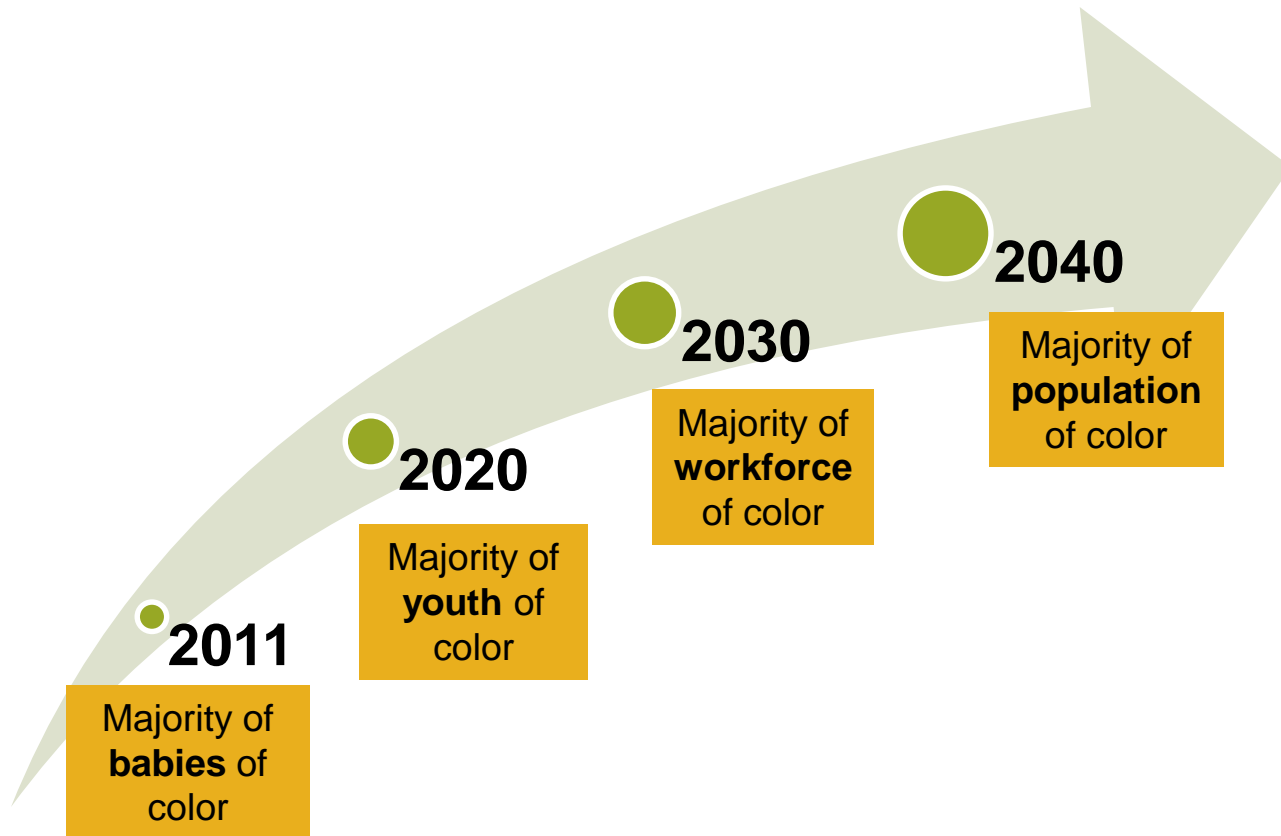
Children who live in low-poverty areas (less than 20 percent in poverty)

National Milestones

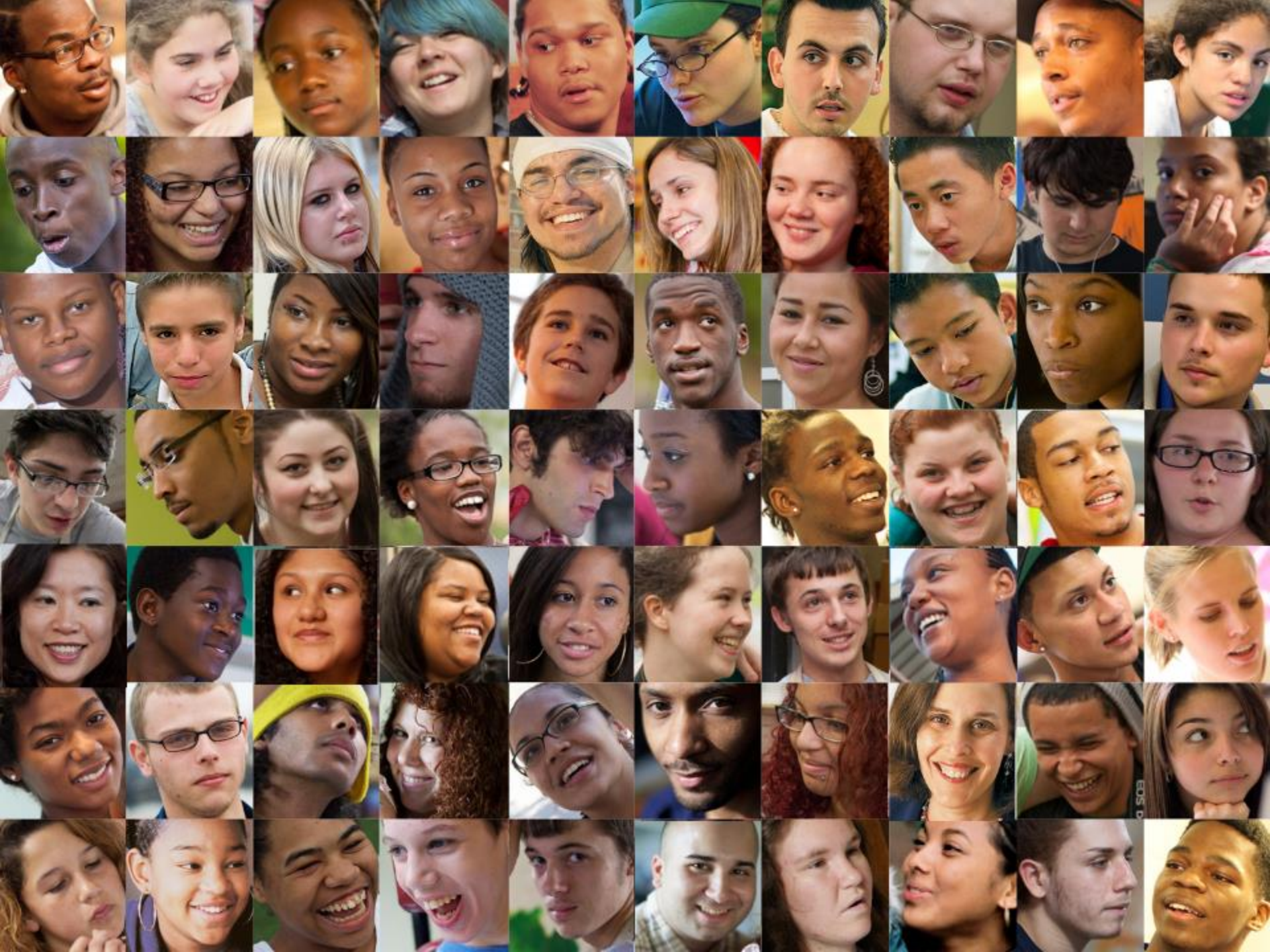
Composite Index



Changing U.S. Demographics











THE ANNIE E. CASEY FOUNDATION

Patrick T. McCarthy, President & CEO

www.aecf.org